



Dallas County Community College District
Office of Institutional Research & Planning
Table of Contents

Goal IV – Community Development
Board of Trustees' Strategic Plan 2005-2008

Executive Summary		1
Measures 1 and 2	Community Outreach and Educational Partnerships	
	- Summary by location	3
	- Highlights – narrative	4
	- Named external partners	7
Measure 3	Dual Credit Headcount & Enrollment	
	- Fall/Spring Historical Comparisons	10
	- By source and college	11
Measure 4	Tech Prep Participation and Headcount	12
Measure 5	SECC Participation	
	- Campaign donations by location and employee	13
	- Total donations	14
Measure 6	Service Learning Summary	15
Measure 7	Community Use of Facilities Summary	16
Glossary of Terms		17



Dallas County Community College District
Office of Institutional Research & Planning
Executive Summary
 Goal IV – Community Development
 Board of Trustees' Strategic Plan 2005-2008

Goal IV – Community Development

We add value to lives and build communities by continually strengthening and expanding our connections with civic, community, and educational organizations.

~ ~ ~ ~ ~

Objective A – Partnerships

Create, expand, and/or strengthen partnerships with civic, community, and educational organizations to improve the quality of life in our communities.

Measures and Results:

1. Significant community outreach events
 - a. There were more than 450 community and educational outreach events during 2005/2006.
 - b. More 300 community partners have been identified for 2005/2006.
 - c. Attendance at these events has been conservatively estimated at more than 130,000.

2. Educational partnership summary
 - a. The colleges continue to encourage education through a variety of partnerships – with approximately 200 individual educational partners identified for 2005/2006.
 - b. The District continues to maintain a significant presence through participation in education-related associations and other organizations which contribute to a strong educational environment.

3. Dual credit headcount and enrollment
 - a. As the reporting rules for participating schools continue to be formalized, the headcount appears to fluctuate. However, the participation levels for both spring and fall of 2006 have increased.
 - b. The implementation of HB1 could be the source of some additional and significant enrollment as high schools are mandated to provide the opportunity for dual credit.

4. Tech Prep participation and headcount

While ISD participation fluctuates, the number of students participating in DCCCD Tech Prep programs continues to rise.

5. SECC contribution summary

- a. DCCCD employees continue to be strong financial supporters of the community and beyond through contributions to the State Employee Charitable Contribution Campaign (SECC).
 - b. Increasing the contribution for 2006 by \$32,164, a total of \$419,596 was contributed by DCCCD employees.
 - c. More than 85% of all FT employees participated in the campaign, an increase of approximately 4% in overall employee participation.
-

6. Service learning summary

While the student headcount involved in service learning has declined by approximately 500 students, the estimated total activity hours increased by 350 hours in 2005/2006.

7. Community use of facilities summary

As college records and tracking capabilities have improved, the reported facility usage has grown significantly.

Dallas County Community College District
Community Outreach and Educational Partnership Summary
2005/2006

Location	# of Activities	Single Event	On-Going	** Estimated Attendance	Partner Sources *							
					ISD or other Educational Entity	Community (not faith-based)	Community (faith-based)	For-Profit	Not-for-Profit	Media	Public Sector	Other
District Office	110	110	0	19,695	79	16	5	6	1	0	0	3
Brookhaven	7	3	4	2,070	1	0	0	1	6	0	0	0
Cedar Valley	28	7	21	3,318	12	1	0	8	6	0	1	0
Eastfield	158	15	143	8,111	42	31	19	54	3	0	12	0
El Centro	43	8	35	13,427	11	6	1	6	14	0	6	2
Mountain View	31	18	13	8,246	19	17	1	1	10	1	4	2
North Lake	12	2	10	60,210	3	2	0	5	2	0	3	0
Richland	44	1	43	15,624	23	6	4	2	19	0	5	0
LeCroy Center	17	12	5	675	10	0	0	4	2	0	1	0
District Service Center	1	0	1	n/a	0	0	0	0	1	0	0	0
Totals	451	176	275	131,376	200	79	30	87	64	1	32	7

Source: College data compiled by District Institutional Research & Planning

*Note: Some activities include multiple partners.

**Note: Some activities did not include an estimated attendance, so this number is considered a conservative estimate of actual attendance.

The data request was changed to include more specific information in 2005/2006, and comparisons with prior year information is not compatible. Future reporting in this category will include comparative information.

Dallas County Community College District
Highlights of Some Community Outreach and
Educational Partnership Efforts
2005/2006

Community outreach and educational partnerships come in a variety of sizes and shapes – touching a few to thousands of participants in hundreds of events. The audience includes all ages, from early childhood through seniors, from diverse backgrounds, education, and experience. The focus may include a variety of interests from educational transitions and preparation, cultural and fine arts appreciation, ecology, science and technology, literacy, and job readiness. Many relationships represent decades of on-going work on behalf of the citizens and students of Dallas County, and many with an emphasis toward “closing the gaps.”

A sample of the events included in the summary of community outreach and educational partnerships for 2005/2006 include:

American Association of University Women

For the past 15 years, Brookhaven College has partnered with the Farmers Branch/Carrollton American Association of University Women (AAUW) and the CFB-ISD in holding a career workshop to interest seventh and eighth grade girls in the fields of math and science. The six-hour *Reach for the Stars* program began with fewer than one hundred young women and has grown to more than 300 attendees. Community businesses serve as sponsors to help finance the cost of the conference. Each year Brookhaven students volunteer to serve as campus guides for the participants.

Geosciences' Related Partnerships

Through the Ellison Miles Geotechnology Institute, Brookhaven College provides outreach to K-12 students and teachers with three on-going programs: encouraging the use of GIS technology, linking geoscience professionals with local science classrooms to provide lectures and laboratories, and training teachers in expanding their teaching of earth system science. More than 150 teachers and 500 students were involved during 2005/2006.

The South Irving Center

Partnering with the City of Irving, Irving Community Library, Texas Workforce Commission, and Irving Cares (a nonprofit charitable organization), North Lake College opened the South Irving Center in 1997. The Center expands services of the college to the city's south side, and provides instruction in Spanish as well as English. The center also houses the college's GED Institute and is an official GED testing site. The Irving Rotary Club provides scholarships for GED students and a special certificate program designed to prepare adult students for office careers is supported by a grant from Verizon.

Dia de la Familia

This annually sponsored event promotes higher education awareness to the Hispanic community, involving the entire family in a day-long celebration. All DCCCD colleges are represented, and many other local businesses and non-profit organizations are sponsors and participants as well.

Assessment Activities Supporting Student Success

Cedar Valley, Eastfield and Richland have partnered with a variety of their service area high schools to provide testing to 10th to 12th graders for the purpose of assessing college readiness, while increasing graduation rates and college completion rates for students, many of whom are minority, first-generation attendees. Mentoring and other counseling assistance is provided by a variety of college staff.

Katrina Tree Recovery

Eastfield College Phi Theta Kappa students partnered with the National Audubon Society and the National Arbor Day Foundation delivering trees in areas in Mississippi and Louisiana devastated by Katrina. The Eastfield students, through the Katrina Tree Recovery Campaign, sought to provide free trees to replace trees lost during hurricane Katrina, some of which were over 100 years old. This effort both helped to improve property value and reestablish the self-esteem and civic pride of the property owners in devastated areas. Further, replanting of natural indigenous forests by residents and volunteers will bring back birds and reestablish the local ecosystem.

Exxon Mobil Academy

The Exxon Mobil Green Team was created 20 years ago through a partnership between the City of Dallas, the Exxon Mobil Foundation and El Centro College. The Exxon Mobil Academy enrolls 100 high school students each year and provides instruction in the areas of reading, writing, mathematics, and computer information systems. This program combines instruction and community service, with students working for the City of Dallas Parks and Recreation Department or building houses for low income families through the City of Dallas Housing Department. North Lake College supervises the construction program that works with various community-based housing agencies. Over 50% of youth enrolled over the years in the Exxon Mobil Green Team have returned to attend college at one of the DCCCD campuses.

Texas Health Resources

Texas Health Resources and El Centro College are working together to expand enrollment in the Associate Degree Nursing program by 80 students per year. This partnership allows the college to utilize expanded clinical and lab practice sites, and access increased numbers of qualified faculty. Students are chosen for the program by THR, receive tuition assistance and qualify for continuing employment.

T-STEM Academies

Richland College partnered with the two high schools in the Dallas area that were awarded T-STEM Academies by the Texas Education Agency this year – Conrad High School in the Dallas ISD and Berkener High School in the Richardson ISD. The T-STEM Academies are considered to be a critical component of the state's "Closing the Gaps" efforts with outreach to students of color and female students.

The Southern Dallas County Educational Consortium

This consortium is comprised of members from educational institutions (including Cedar Valley and Mountain View Colleges), business and industry, individuals, civic and faith-based organizations in southern Dallas County. A signature project is a Kid's College for students in the 1st-4th grade. The program includes math, science and technology, character education, the importance of going to college and living in a global society.

Prison and Post-Incarceration Programs

Cedar Valley College and the Federal Correction Institute at Seagoville have partnered to provide educational offerings to incarcerated men. The individuals develop employable skills and college credit providing a means of livelihood and decrease the likelihood of recidivism. El Centro College and the City of Dallas have partnered in a similarly focused program, "Project Re-Connect," to promote improved job skills and faster returns to work for those previously incarcerated.

Dallas Tri-Chamber Agreement

The DCCCD and three local chambers – the Dallas Black Chamber of Commerce, Greater Dallas Asian American Chamber of Commerce and the Greater Dallas Hispanic Chamber of Commerce – entered into an agreement to increase business opportunities for minority and woman-owned enterprises with the DCCCD.

**Dallas County Community College District
Goal IV/ Community Development-Partnerships
Academic Year 2005-2006**

Named External Partner(s)

21st Century	Children's Courtyard - Grand Prairie
A M Brooks Head Start	Children's Courtyard - Grapevine
ABC Day Care	Children's Courtyard - Willow Grove
After School All Stars	Christian Care Center
Aisha's Child Care	Cinco de Mayo Parade (ETS, UB, Marketing)
AIWF	CitiBank
Alliance Data Systems	City of Dallas
AM Brooks Head Start	City of Dallas Parks and Recreations
American Association of University Women	City of Dallas Project Reconnect
American Law Network	City of Dallas Water Utilities
Americorps	City of Irving
Amiel Christial School	City of Richardson
Anderson Child Care	Cliffview Child Care
Arapaho Rd. Baptist Child Care	Cliffview Church Child Care
Argosy University	Coast Learning Systems
Art Institute of Dallas	Coastline Community College District
Attitudes and Attire	Coca-Cola Bottling of North Texas
Audubon Park Baptist Child Care	Concord Missionary Baptist Church
Austin-Commercial	Cone Head Start
Bachman Head Start	Conrad High School
Bahai' Faith	Continental Truck Driver Training
Bank of America	Coppell Chamber of Commerce
Baylor Child Care	Criminal Justice organizations
Baylor Health Care (Worksource)	Crockett Elementary
Baylor Medical Systems	Dallas Area Rapid Transit
Baylor Senior Health Centers	Dallas Association for Parent Education
Bea's Kids	Dallas Association for the Education of Young Children
Bedford, St. Martin's Publishers	Dallas Children's Theatre
Bethlehem Center	Dallas Convention Center
Big Brothers/Big Sisters	Dallas County Older Adult Services
Blue Eyed Productions	Dallas County Worksource
Boys & Girls Club of Greater Richardson	Dallas Day School
Braswell Kids	Dallas Fashion Incubator
Bright Horizons	Dallas Fire & Rescue
Bryan's House	Dallas Fire Department
Building Lives Learning Center	Dallas Independent School District
Burbank Head Start	Dallas Market Hall
C.C. Young	Dallas Police Department
Callier Center	Dallas Public Library
Carrollton Farmers Branch Independent School District	Dallas Regional Minority Enterprise Development
Catholic Charities	Dallas Rotary Club @ Salvation Army Camp - Midlothian
Cedar Hill Independent School District	Dallas Symphony Orchestra
Center for Nonprofit Management	Dallas Trinity Rotary
Centerville Elementary	Dallas Urban League
Central Dallas Ministries	Danka Office Imaging
Charter schools	Denise's Learning Center
Chase Bank	Department of Assistive and Rehabilitative Services (DARS)
Chick-Fil-A	Department of Juvenile Justice
ChildCareGroup	DFW Airport
Children's Choice	DFW Area Health Education Center
Children's Courtyard	DFW Semiconductor and Technology Executive Council
Children's Courtyard - Freeport	

Partnerships

Dickie's BBQ
 DISD - M. Molina High School
 DISD - A. Maceo Smith
 DISD - Carter High School
 DISD - H. Grady Spruce High School
 DISD - Roosevelt High School
 DISD - Samuel High School
 DISD - Skyline High School
 DISD - Townview High School
 DISD - W.W. Samuel High School
 Duke University Medical Center
 Duncanville
 Duncanville Independent School District
 Early Head Start
 East Dallas Head Start
 Education is Freedom
 Educational First Steps
 EFC/Assembly of God Church in Mesquite
 Exxon Mobil Foundation
 Fair Park
 Faith Family Academy
 Family First Child Care
 Family Place
 Federal Express
 Ferguson Oates Head Start
 First State Bank
 First UMC - Rowlett
 Foundation for Community Empowerment
 Frito-Lay
 Gannon Head Start
 Garland Businesses
 Garland Chamber of Commerce
 Garland Independent School District
 Garland Independent School District - Career & Technology
 Giving Tree
 Good Street Child Care
 Grand Prairie Head Start
 Grand Prairie Independent School District
 Griggs Chapel Missionary Baptist Church
 HCS, Incorporated
 Head Start of Dallas
 Head Start of Greater Dallas
 Heritage Children's Center
 Hickory Trace Apartments
 Highland Park UMC
 Hillcrest High School
 Hispanic Contractor's Association
 Hispanic Soccer League
 Hogan Center for Performance Excellence
 Holiday Inn Express
 Home Depot
 Huber, Prater & Henson, P.C.
 International Rescue Committee
 International Women's Consortium
 Irving Cares
 Irving Chamber of Commerce
 Irving Independent School District
 Irving Rotary Club

Isuzu
 Jerry Junkins Head Start
 Jonsson School
 "Keepin" It Real Youth Empowerment Summit
 Kids Green Acres
 Kids R Kids
 Kids R Kids - Irving
 Kindercare Learning Center
 Kingdom's Kids
 Korean First Baptist Church
 La Petite - Mesquite
 Lake West Head Start
 Lakeforest Child Care
 Lancaster Hospital (Worksource)
 Lancaster Independent School District
 Lancaster-Kiest Head Start
 Landauer Child Care
 Leadership Southwest
 League of United Latin American Citizens (LULAC)
 Lew Sterrett Correctional Facility
 Life Charter
 Little Tots
 LoanSTAR
 Lockheed Martin
 Loews Citiplace
 Maple Lawn Elementary
 Marillac
 Mastercraft
 McDonalds
 Mesquite Chamber of Commerce
 Mesquite Community Hospital
 Mesquite Head Start
 Mesquite Independent School District
 Mesquite Medical Center
 Mesquite Public Library
 Mesquite Symphony Orchestra
 Methodist Hospital (Worksource)
 Methodist Hospital Health System
 Metroplex Technology & Business Council
 Metropolitan Christian School
 Mexican Consulate
 MiEscuelita - Buckner
 MiEscuelita - Cockrell Hill
 MiEscuelita - Crossover
 MiEscuelita - Martinez
 MiEscuelita Preschools & Child Care Group
 Miles Foundation
 Miss Pat's Playhouse
 MLK Head Start
 MLK Library
 Montessori Children's House
 MVC Alumni
 NASA Johnson Space Center
 National Association of Pediatric Nurse Practitioners - Greater Dallas
 National Tech Prep
 New Life Child Care
 Nolan Estes Head Start
 Non-Violence Agencies

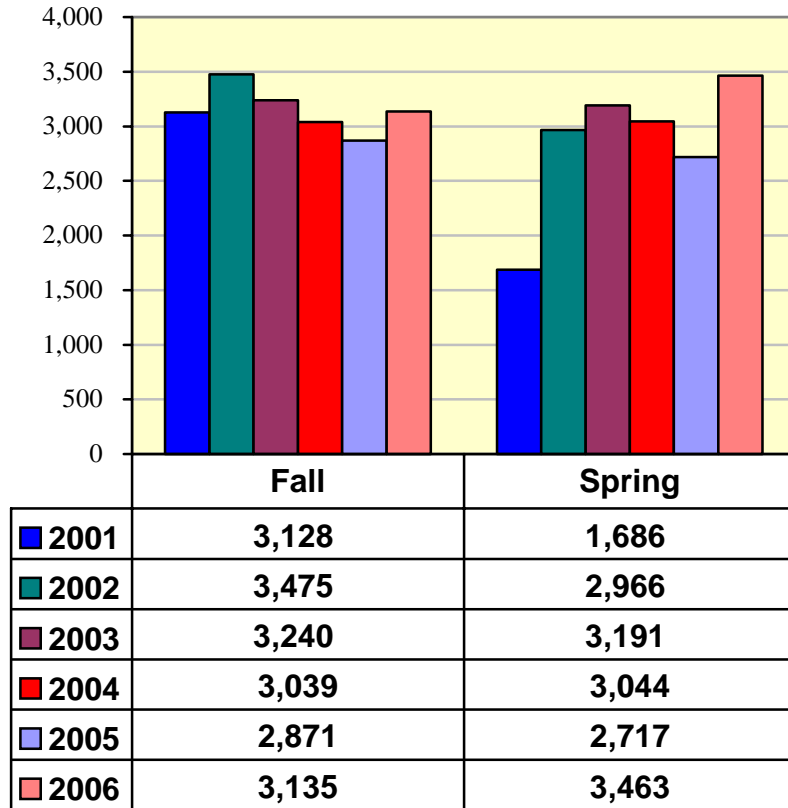
Partnerships

North Dallas Metroplex LINKS
 North Garland Montessori
 North Mesquite High School
 North Texas Community College Consortium
 North Texas Food Bank
 Northway Christian Day School
 Oak Cliff Chamber of Commerce
 Oak Cliff Head Start
 Oak Cliff United Methodist Church
 Oak Creek School
 Oates Crossing Day Care
 On-the-Border
 Open Door Preschool
 Our Children's Center
 Our Lady of Lourdes Catholic Church
 Outback Steakhouse
 Panhandle Plains Bank
 Parker Chase Child Care
 Parkland Health & Hospital System
 PBK, Incorporated
 Peanut Gallery
 PeeWee Angels
 Phi Theta Kappa
 Philips Medical Systems
 Pierce Early Childhood
 Pinyon Tree School
 Plano Independent School District
 Pleasant Grove Elementary
 Prairie View A&M
 Primrose School
 Quality Texas Foundation
 Ranch
 Regency Lincoln Mercury
 Region X
 Regional Interfaith Agencies
 Region's Bank
 Richardson CARE
 Richardson Chamber of Commerce
 Richardson Independent School District
 Richardson Independent School District - AVID
 Robert Muller School
 Rosie Harris Head Start
 Salesmanship Club
 Sanders-Estes Correctional Facility
 Saratov University
 Seagoville High School
 Sen. Royce West
 SER
 Shiloh Terrace Baptist Child Care
 Sidney Lanier Vanguard
 Slocum Printing
 Socorro Gonzales Head Start
 Society for Leadership & Success
 Solar Turbines
 South Oak Cliff High School
 Southern Dallas County Educational Consortium
 Southern Methodist University
 Southern Sector New Car Dealerships
 Southland Corporation - Haskell Ave.

Stonebrook Learning Center
 Student Loan Xpress
 Sunnyview Head Start
 Susie's Lil' sunshines
 Sweet Haven Child Care
 Teamsters Union, Local 745, Dallas
 Texas A & M - Commerce
 Texas Consortium
 Texas Health Resources
 Texas Higher Education Coordinating Board
 Texas Instruments
 Texas Library Association
 Texas Manufacturing Assistance Center
 Texas Society of CPA's
 Texas Women's University
 Texwood
 TGSLC
 The National English Course Advisory Committee
 Thomson/Wadsworth Publishers
 TI Texins Activity Center
 Timber Creek Apartments
 TNT Youth Summit
 Todd Wagner Foundation
 Townsend & Associates
 TX Can Academy
 U.S. Small Business Administration
 United Way
 University of North Texas
 University of North Texas - South Dallas
 University of Texas at Arlington
 University of Texas at Dallas
 University of Texas at Dallas Conference Center
 Urban League of Dallas
 UT Southwestern
 Veteran's Affairs Hospital
 Vogel Alcove
 VoicesVoices.com
 Volunteer Center of North Texas
 Vought Aircraft
 Wachovia Bank
 Walnut Plaza Head Start
 WB33 Kids Fund
 Wells Fargo Bank
 Wesley Rankin Head Start
 Westin Hotel
 Wharton County Junior College
 Whataburger
 White Properties
 Women's Museum in Fair Park
 Woodforest Bank
 YMCA - Irving
 YMCA - Metropolitan Dallas
 YWCA - Irving
 YWCA - Metroplex
 YWCA - North Dallas
 YWCA - Widner
 Z. Wesley Holmes Community Center
 Zale Child Care

**Dallas County Community College District
Dual Credit Headcount**

Fall/Spring Historical Comparisons



- Comparisons are made between fall and spring semesters to show the significant fluctuations that can occur as a result of student enrollment and changes in ISD agreements.

Source: District Office of Educational Affairs and Institutional Research & Planning

Dallas County Community College District
 Fall 2006 – Dual Credit Headcount and Enrollment – by Source – and College

Colleges	PUBLIC			CHARTER			PRIVATE			EARLY/COLLEGIATE HS		HOME SCHOOLS	
	Headcount	Enrollment	# of Schools	Headcount	Enrollment	# of Schools	Headcount	Enrollment	# of Schools	Headcount	Enrollment	Headcount	Enrollment
BHC	233	329	11	7	7	2	49	49	3	79	158	21	40
CVC	337	426	11	0	0	0	18	28	2			29	64
EFC	164	257	15	12	22	2	84	143	5			102	242
ECC	195	225	7	32	43	1	1	1	1			3	5
MVC	464	575	12	45	80	1	122	157	2	100	259	34	69
NLC	300	481	6	23	32	3	41	85	2			28	64
RLC	308	379	18	2	2	1	52	111	10	177	1,115	94	272
DCCCD	1,993	2,672	54	119	186	9	367	574	22		1,532	300	756

District Data:

Total Headcount = 3,135

Total Enrollment = 5,270 (Courses with census dates between 07/16/06 and 09/11/06 were counted.)

To more fully describe enrollment in this category including summer tracking, future reports will include annual information.

Source: District Office of Educational Affairs, and Institutional Research & Planning

Dallas County Community College District Tech Prep Participation and Headcount

The Dallas County Community College District has College Tech Prep agreements with sixteen neighboring Independent School Districts, including:

PARTICIPATING TECH PREP ISDS	
Carrollton Farmers Branch	Cedar Hill
Coppell	Dallas
Denton	Duncanville
Forney	Garland
Grand Prairie	Irving
Lancaster	Lewisville
Mesquite	Pleasant Grove (Texarkana)
Prosper	Richardson

Three independent school districts opted out of the program in 2005/2006: Rockwall, Red Oak, and Ponder. Each of these districts was out of the Dallas County service area, and chose to partner with a college closer to them or end the program offering in their organization.

The College Tech Prep articulation agreement indicates the specific responsibilities of the secondary institution, the post-secondary institution, and the student. High school students may earn up to fifteen hours of college credit while in high school.

Academic Year	Total # of Tech Prep Agreements with Area School Districts*	# of High School Students Identified as Tech Prep**	Approximate # of Tech Prep Students Enrolled at DCCCD Colleges***
2005-2006	628	1,899	707
2004-2005****	628	1,317	623
2003-2004	497	1,083	404
2002-2003	351	943	357
2001-2002	407	1,509	50

Source: District Office of Tech Prep, Educational Affairs

Notes:

*In 2004-2005, Tech Prep Articulation Agreements became valid for two consecutive academic years.

**In order to be identified as Tech Prep Students, high school students must voluntarily self-identify with DCCCD.

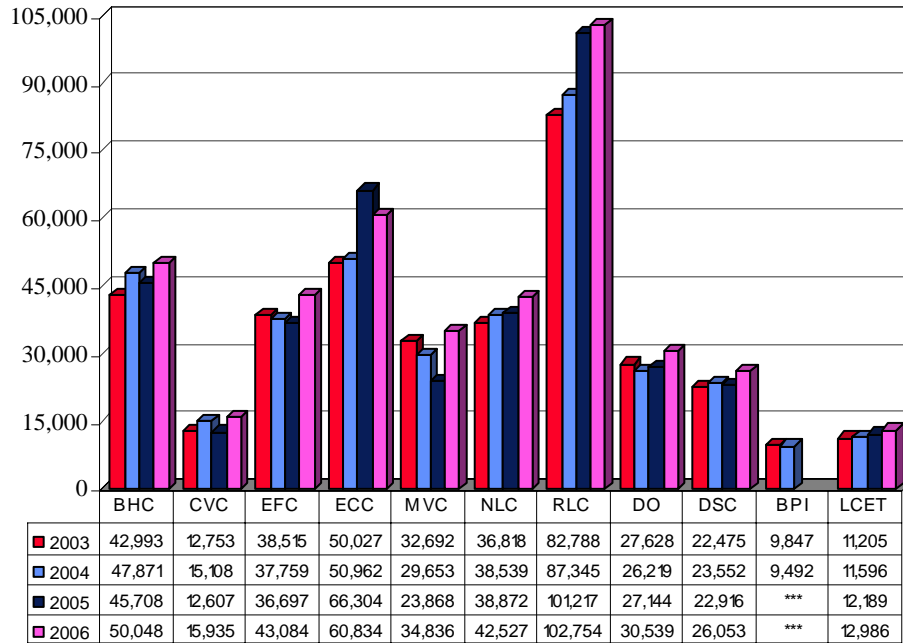
***DCCCD enrollment numbers for each year are based on students who graduated from high school during the indicated academic year.

****The 2004-2005 numbers previously reported were based upon total participation across all academic years in the tech prep databases. This did not allow for ease of comparison between academic years. Therefore, we have revised the report so that each academic year's numbers are based solely upon students who are indicated to graduate in that year, and not total students who identify or enroll.

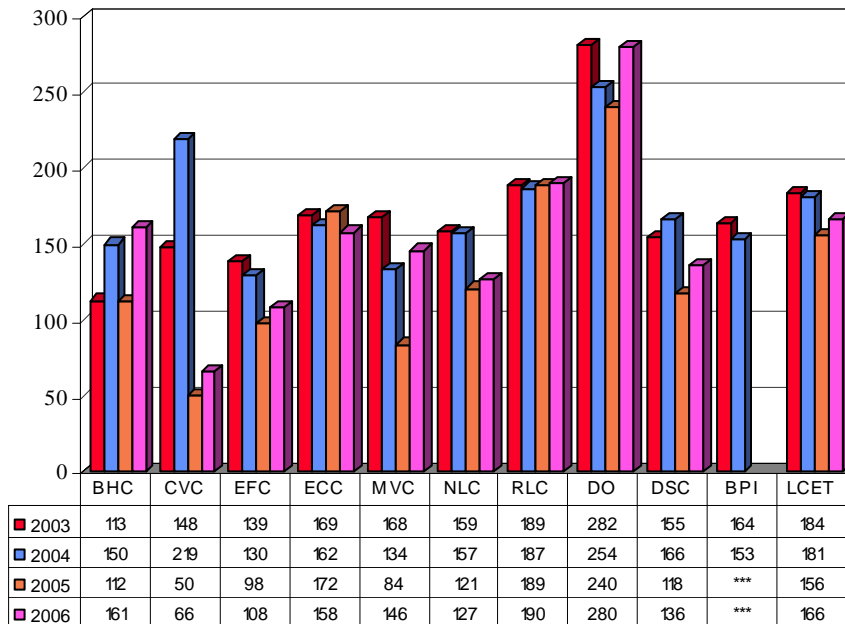
DCCCD State Employee Charitable Campaign Participation

(Source: DCCCD SECC Records –
*** BPI and El Centro Participation Combined in 2005)

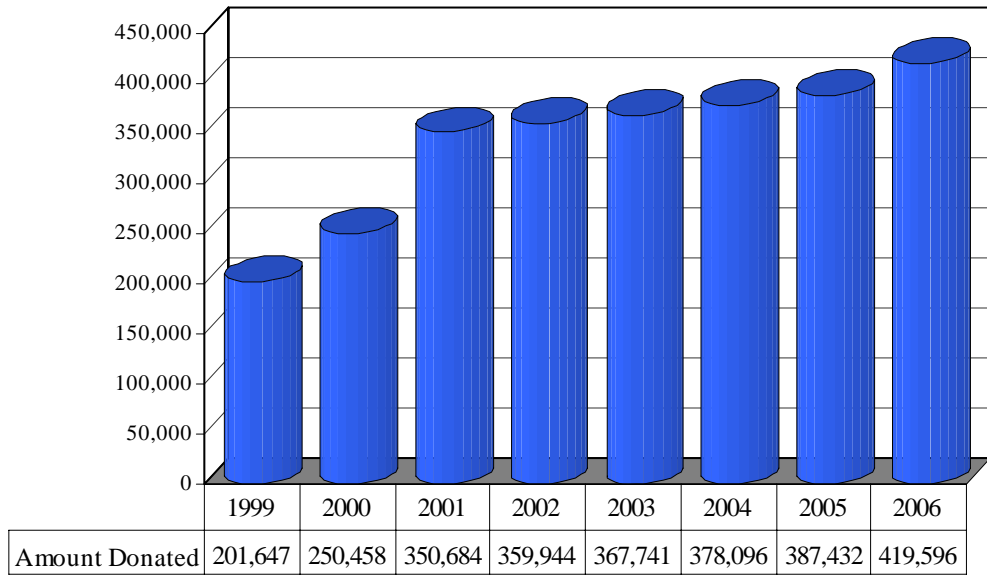
Total State Employee Charitable Campaign Donations by DCCCD College/Location



SECC Per Capita Employee Contributions by DCCCD College/Location



Total SECC Donations from DCCCD Employees



Source: DCCCD SECC Records

Dallas County Community College District
Service Learning Summary

Location	2003-2004		2004-2005		2005-2006	
	Student Headcount	Total Hours	Student Headcount	Total Hours	Student Headcount	Total Hours
Brookhaven	447	n/a	304	5,487	343	5,904
Cedar Valley	n/a	n/a	175	3,821	96	2,425
Eastfield	337	6,286	265	4,624	74	1,290
El Centro	377	4,076	476	6,395	204	3,900
Mountain View	195	4,358	212	5,415	149	2,852
North Lake	243	4,473	236	2,959	289	6,027
Richland	576	9,614	780	12,503	788	14,972
TOTAL	2,175	28,807	2,448	41,204	1,943	41,354

Source: College supplied data compiled by District Institutional Research & Planning

Notes:

- Cedar Valley has undergone a reorganization and reassignment of the area to new leadership. Increased efforts are being made to promote the program.
- Many El Centro College students were involved in a variety of Hurricane Katrina relief efforts through other college clubs and student programs events, reducing the number of participants in the service learning program.
- Students in the teacher education program at Mountain View did not participate in service learning activities due to required time commitments.
- North Lake has increased faculty communication to encourage understanding and participation, and provided a service learning "fair" to attract a broader opportunity base.
- At Richland, some instructors have increased the required number of service learning hours; however, a significantly larger number of participants and hours are expected in 2006/2007 as regulations are implemented for the Richland College High School student body.

Dallas County Community College District
Community Use of Facilities Summary

	2003-2004	2004-2005	2005-2006
Location	# of Events/Activities	# of Events/Activities	# of Events/Activities
Brookhaven	54	75	298
Cedar Valley	n/a	15	21
Eastfield	n/a	42	50
El Centro	n/a	24	313
Mountain View	50	52	114
North Lake	14	9	21
Richland	n/a	41	45
LCET	n/a	n/a	25
TOTAL	118	258	887

Source: College supplied data compiled by District Institutional Research & Planning

Notes:

- Brookhaven and El Centro have implemented processes to gain more accurate usage statistics, resulting in significant increases in reported events/activities for 2005/2006.
- Cedar Valley College has included information regarding space availability for community use in marketing materials during the year, to encourage future use.
- Increases at Mountain View are the result of expanded community leagues in soccer and basketball.
- While there are many requests for use of space at North Lake, most reoccurring events cannot be scheduled due to instructional priorities at the college (an example would be in the performance hall usage by the theatre department).
- The LeCroy Center has new and on-going relationships with Leadership Garland, the Texas Society of CPAs, and the American Law Network.

Goal IV – Community Development Glossary of Terms February 2007

TERM	DEFINITION
Closing the Gaps	A program of the Texas Higher Education Coordinating Board, first adopted in 2000, and designed to close the gaps in student participation, student success, excellence, and research. (http://www.theccb.state.tx.us/ClosingtheGaps/)
Community Outreach	Active participation in needs assessment, planning and strategy implementation with a wide variety of partners serving Dallas County, designed to complement and promote educational opportunities available within the DCCCD.
Contract Training	Income generated from a contract between a DCCCD institution and a for-profit or not-for-profit entity, excluding funding directly derived from local, state, or federal grants from private or corporate gifts.
Dual Credit	Credit earned for both high school and college via concurrently enrolled high school students.
Educational Partnership	A formal or informal collaboration between one or more DCCCD colleges and a “pre-K through 16” educational entity, for the mutual benefit of the partners, their students, and the community.
K-12	Sometimes written as “K through 12”; describes kindergarten through secondary education (high school).
K-16	Sometimes written as “K through 16”; describes kindergarten through university-level education.
Pre-K-16	Sometimes written as “Pre-K through 16”; describes the range of DCCCD’s potential educational partners, extending from early childhood educational enterprises (pre-kindergarten) through public, private, charter, and home schools (elementary, middle, and high school), on to four-year colleges and universities in preparation for graduate programs.
Service Learning	This is a teaching pedagogy that combines academic instruction with active community service. Students act as active community partners in applying classroom learning to real world situations. Such situations contribute to expanding new skills, improving critical thinking skills, exploring career possibilities, meeting community needs and building citizen support.
SECC	State Employee Charitable Campaign.

TERM	DEFINITION
T-STEM	Texas-Science, Technology, Engineering and Mathematics program developed by the Texas High School Project, and designed to promote high school graduation and college enrollment. This program is administered through the Texas Education Agency and includes a variety of partners.
TEA	Texas Education Agency (http://www.tea.state.tx.us/index.html)
Tech Prep	An educational process where the college and the public high school districts cooperatively develop and implement a planned sequence of course work to prepare students for technologically advanced careers. Tech Prep programs are endorsed and approved by The Texas Education Agency (TEA) and The Texas Higher Education Coordinating Board (THECB). Through the Tech Prep process, students earn college credit while in high school and advance to college programs after graduation.
THECB	Texas Higher Education Coordinating Board (http://www.thecb.state.tx.us/)
THR	Texas Health Resources